

Vivace Range



Snack & Food



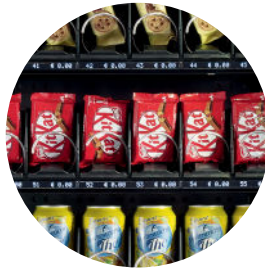


Design and user interface

- Essential design easy to fit in any location.
- Capacitive keyboard and TFT display 4,3" capable to feature spot, adv and nutritional facts.
- LED lighting of the white cell for enhanced visibility of the displayed products (+ 35% luminosity).



An elegant and uncluttered design



High visibility cell

Energy consumption labels



Maximum flexibility

- Vivace is available as a Slave model too
- Up to 6 trays which can be easily moved thanks to Vertical Flex (V-Flex) system.
- The space inside the cell is optimized; the enhanced distance between trays and glass window allows the dispensing of products with non standard packaging, such as salads and ready to go meals
- Delivery bin with wider opening
- Enhanced ETL trays.



High energy efficiency

- C class according to EN 50597 scale.
- Perfect insulation of the cabinet.
- Cooling unit with R290 gas.
- High energy efficiency and dramatic decrease of pull down time.
- Vivace can manage up to three temperatures inside the cell or can be set with a 100% Food or Ambient layouts.



Electronics

- Vivace is compatible with Newis solutions.
- With Breasy it is possible to select and pay for your product in a completely touchless mode (with Hi! Platinum Executive)

Vivace Range

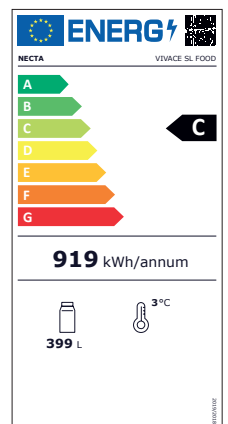
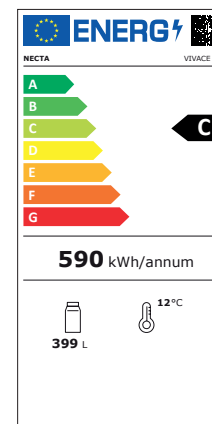
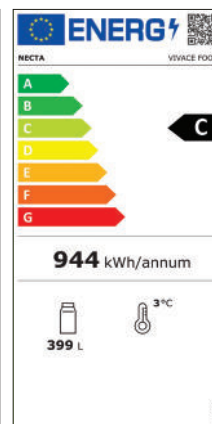
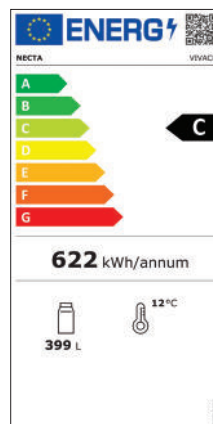


Vivace is available as a Slave model too



Features

Height	1700 mm
Width	746 mm
Depth	874 mm
Weight	200 kg ca.



necta.evocagroup.com

NECTA

EVOCA SPA

Via Roma 24, 24030 Valbrembo (BG) Italia
Tel. +39 035 606111 - Fax +39 035 606519

